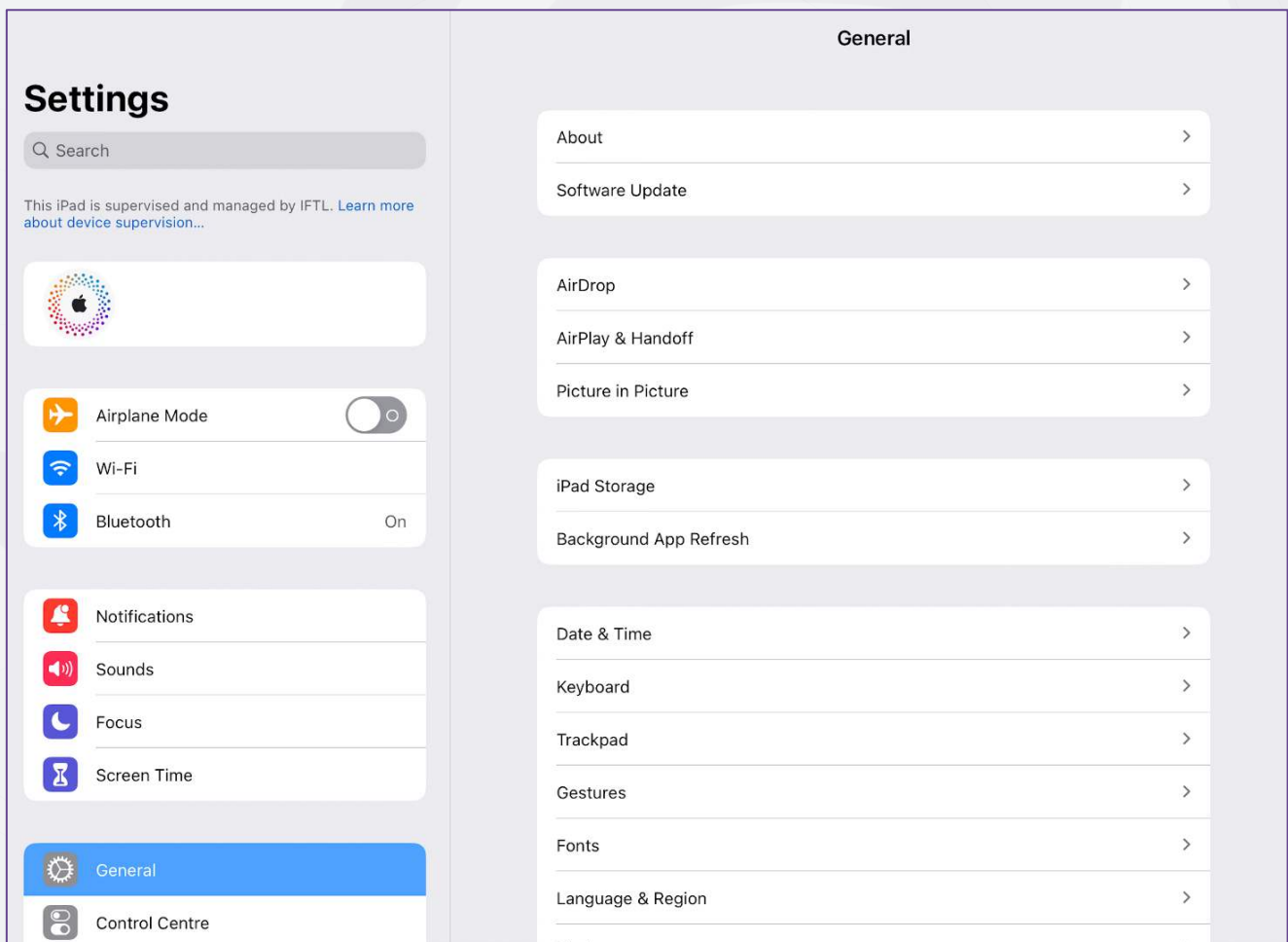


## Connect to Wi-Fi

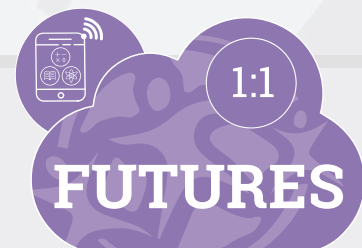
In order for your child's iPad to receive the necessary settings and updates, it requires access to the internet. This guide will share where to find the Wi-Fi setting on the iPad.



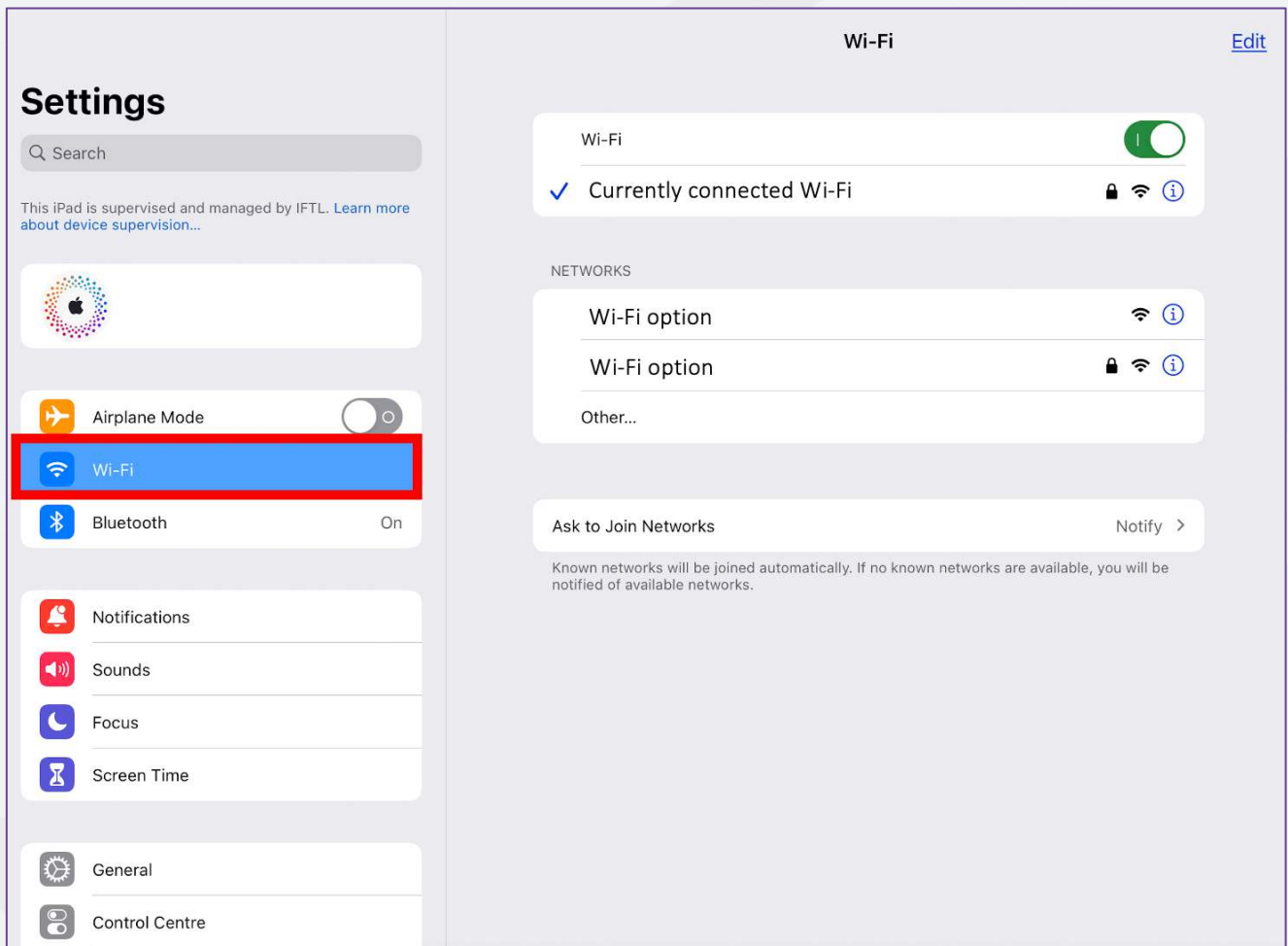
Step 1: Open the settings application on the iPad.



Inspiring Futures  
through Learning



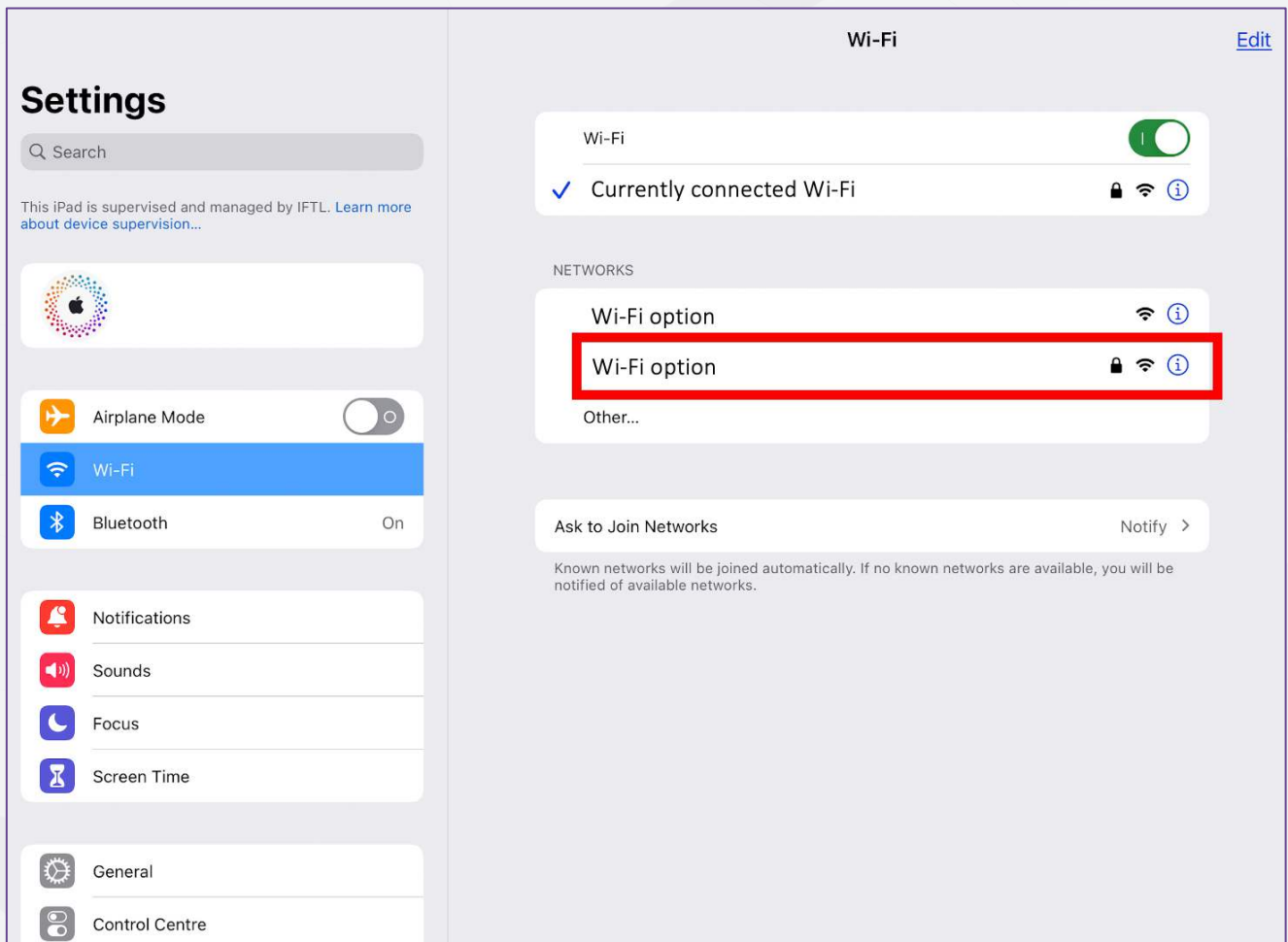
Step 2: Select Wi-Fi from the options on the left of the screen.



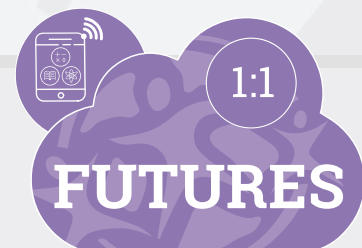
Inspiring Futures  
through Learning



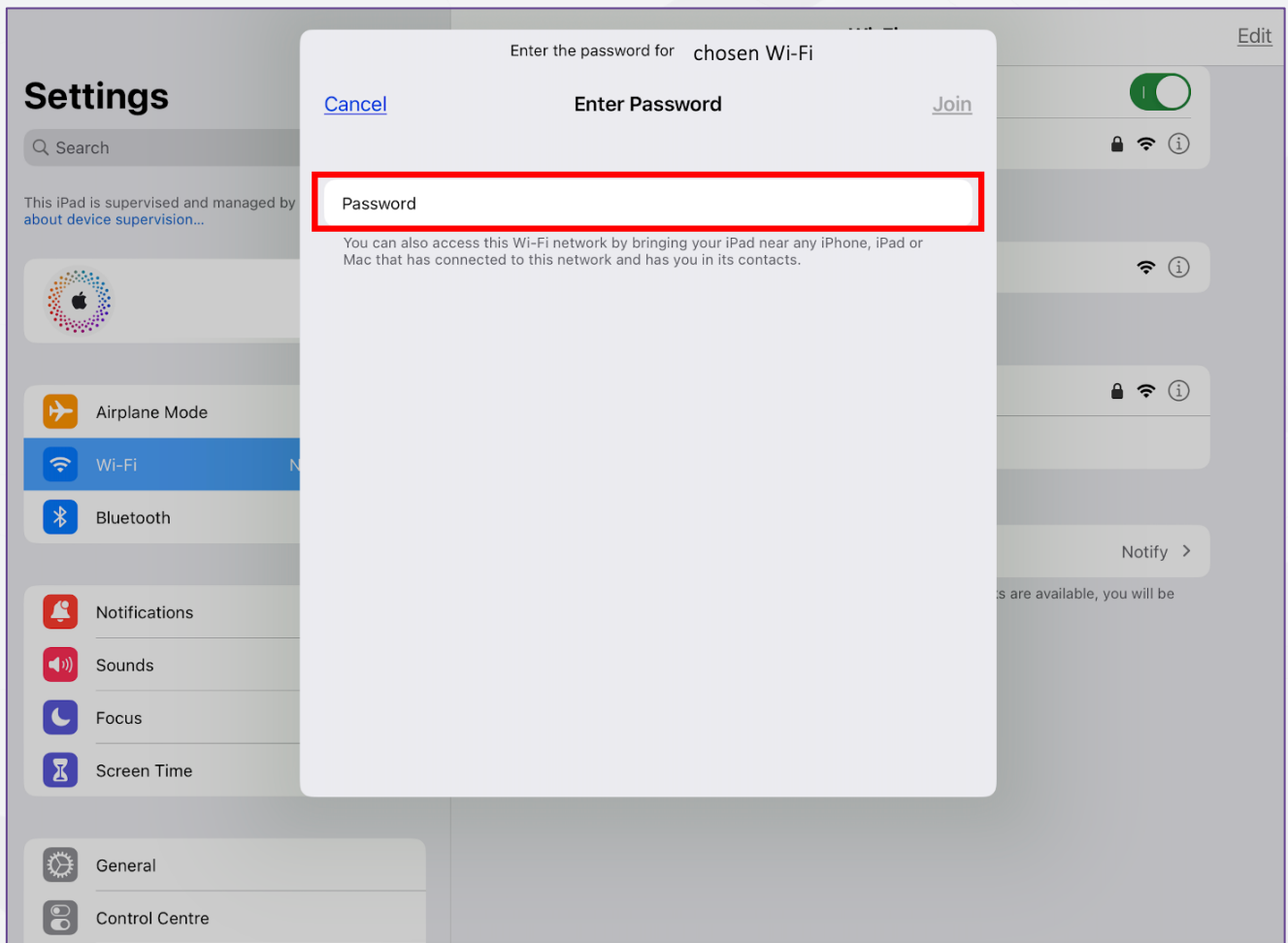
Step 3: Choose the required Wi-Fi option from the list on the right.



Inspiring Futures  
through Learning



Step 4: Enter the password for the Wi-Fi connection.



Inspiring Futures  
through Learning

