

Project newsletter

April 2021

An update from Glebe Farm School Project

Welcome to Morgan Sindall's Introduction to Glebe Farm School Project.



Project Overview

Glebe farm school is an all through school that Morgan Sindall's Northern Home Counties office has been selected to deliver by Milton Keynes Council. We commenced construction on 23rd February 2021 and are due to hand the completed school over on September 2022.

The schools structure consists of steel frame and precast planks to floors plates with a mixture of various types of cladding to finish the external look of the building. There will also be a sports hall and a multi use games area as well as a number of Sport England pitches.

Project Update

Over the month of March, we have commenced with a variety of activities. Foundations consist of excavation, reinforcement and concrete pouring, for the pads and ground beams. The future visitor car park is being built up also and surrounding areas shaped to future levels. The water storage attenuation tank is almost complete. Sustainable recycled hoarding is being installed to the front of the site, offering a space for us to display information and create a secure surrounding.

What's happening this month

During April, we have a lot of activities planned. The 26th is a busy day, with both the structural steel installation with our experienced contractor, along with our permanent welfare facilities.

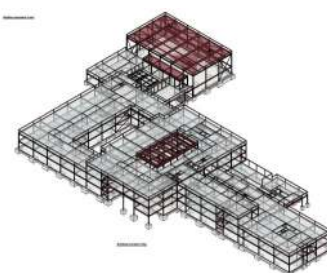
This month we will also be looking to get all services in place from the main route, ready to supply the future school facilities. Permanent fencing will also be completed throughout the month of April on the south end of the boundary.

Current progress photos



Further activities

Along with the ground levelling process and car park formation, we will be laying the tarmac sub base for our subcontractor storage area and delivery haul road. This area also has the Wheelwash, to keep the local roads clean.



Considerate Constructors Scheme

The project is proudly registered with the Considerate Constructors Scheme. For more information please visit www.ccscheme.org.uk



Project newsletter

April 2021

An update from Glebe Farm School Project

Welcome to Morgan Sindall's Introduction to Glebe Farm School Project.



Sustainable solutions

Morgan Sindall have teamed up with both Thinkhire and EP services, to include some sustainable technology on site.

Our now installed Solartainer generates enough electricity for all site welfare facilities, with backup when necessary with HVO fuel. This is one of our first sites to use this product and is now set for the future.

EP services have also kindly offered to supply us with eight solar panels that run in line with the main power supplies, to make our energy use even more efficient.

Solartainer



Microsite

Below is our newly started project microsite address, here we will be adding articles, highlighting updates on site and any special events. Feel free to log on and keep up to date with our updates.

Easter community engagement

Last month, Morgan Sindall provided one hundred easter bags for the local community. Feedback received has been fantastic and we are very proud to have offered some entertainment!

Contact Us

As we move forward, to reduce our impact on the environment and reduce paper copies, all further information will be available on the project website which will be updated monthly with key milestone dates, delivery dates and any out of hours work.

If you require a paper copy of monthly updates, please contact:

James Wood—Project Manager

E: James.wood@morgansindall.com



Considerate Constructors Scheme

The project is proudly registered with the Considerate Constructors Scheme.

For more information please visit

www.ccscheme.org.uk

